

# Instruction Sheet

## Kit Number: 73800800

### REMOTE CHUTE ROTATION KIT



**WARNING: FAILURE TO FOLLOW INSTRUCTIONS** could result in personal injury and/or damage to unit.  
Read, understand, and follow all safety practices in Owner/Operator Manual before beginning.

#### Package Contents

Check the contents of your kit for the parts listed below. Also see Figure 1.

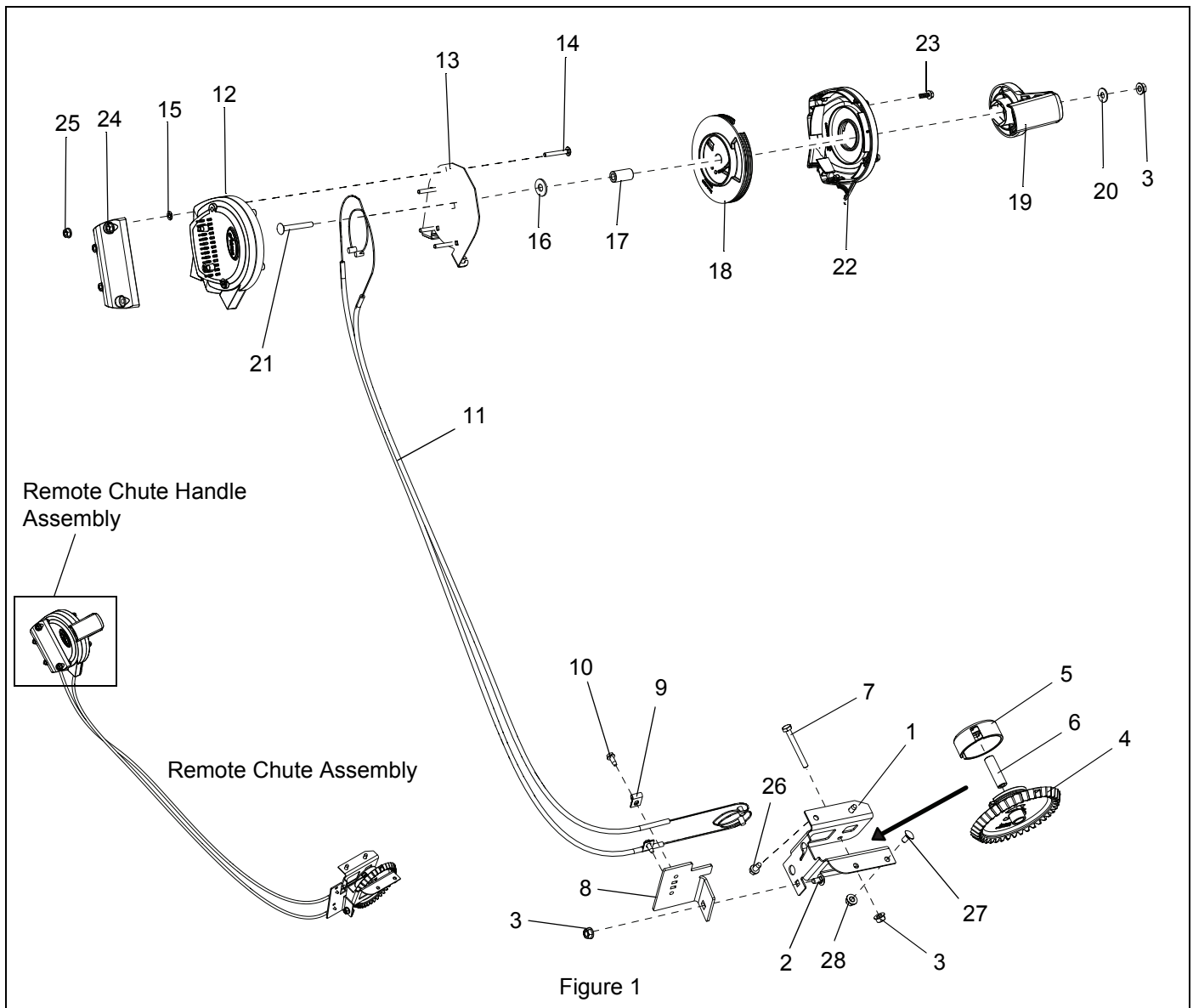
Parts Pre-assembled into Remote Chute Assembly			
Item	Description	Qty	Ariens P/N
1	Chute Gear Bracket	1	04584851
2	1/4-20 x 1/2" Round Head Square Neck Bolt	1	06220600
3	1/4-20" Top Locking Flange Nut	3	06543500
4	Chute Gear	1	04549700
5	Chute Spool Cover	1	04582000
6	.265 x .50 x .665" Sleeve Bushing	1	05501130
7	1/4-20 x 2-1/4" Hex Bolt	1	05956700
8	Cable Anchor Bracket	1	04584951
9	Cable Clip	2	04778100
10	10-24 x 1/2" Tapping Screw	2	07415800
11	Chute Cable	2	06900536
12	Right Hand Remote Housing	1	04595800
13	Remote Chute Control Frame	1	04636051
14	10-24 x 1-1/2" Round Head Square Neck Bolt	4	06200215
15	Push Nut	4	06500714
16	3/8 x 7/8 x 5/64" Flat Steel Washer	1	06435700
17	.265 x .505 x .995" Sleeve Bushing	1	05501131
18	4-1/4" Plastic Pulley	1	04590300
19	Remote Handle	1	04595600
20	5/16 x 3/4 x 1/16" Flat Steel Washer	1	06435800

#### Parts Pre-assembled into Remote Chute Assembly

Item	Description	Qty	Ariens P/N
21	1/4-20 x 2" Round Head Square Neck Bolt	1	06222900
22	Left Hand Remote Housing	1	04595700
23	3/4" Hex Head Tapping Screw	4	06100216
24	Remote Bracket	1	04595900
25	10-24 Top Lock Flange Nut	4	06500712

#### Separate Parts

Item	Description	Qty	Ariens P/N
26	1/4-20 x 1/2" Tapping Screw	2	07400034
27	1/4-20 x 1/2" Round Head Square Neck Bolt	2	06220600
28	1/4-20" Top Locking Flange Nut	2	06543500

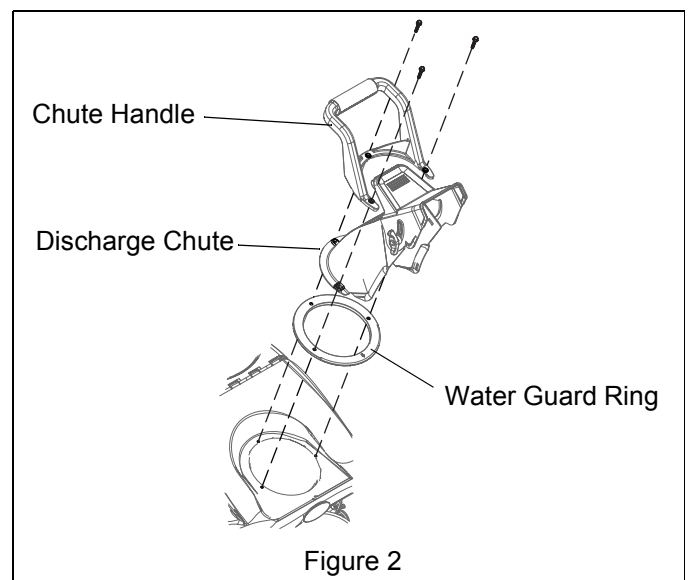


### Required Tools

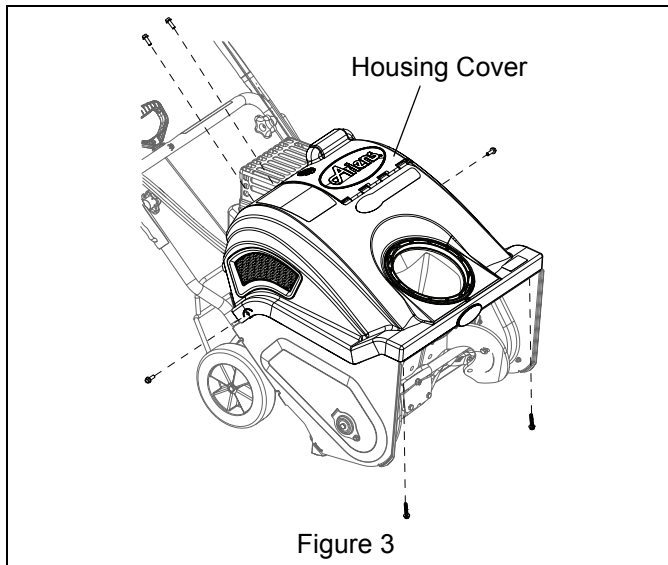
- 1/4" Drive Ratchet
- 1/4" Drive 3/8" Socket
- 1/4" Drive 7/16" Socket

### Installation

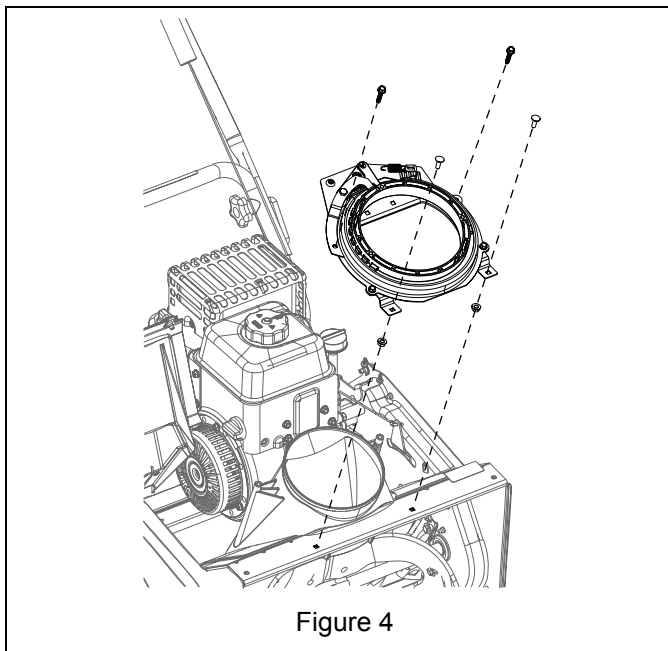
1. Position discharge chute in forward, centered position.
2. Remove three screws retaining chute assembly and remove chute handle, discharge chute and water guard ring. Retain hardware. Retain chute handle for future use, if desired. See Figure 2.



3. Remove six screws retaining housing cover and remove cover. Retain hardware. See Figure 3.

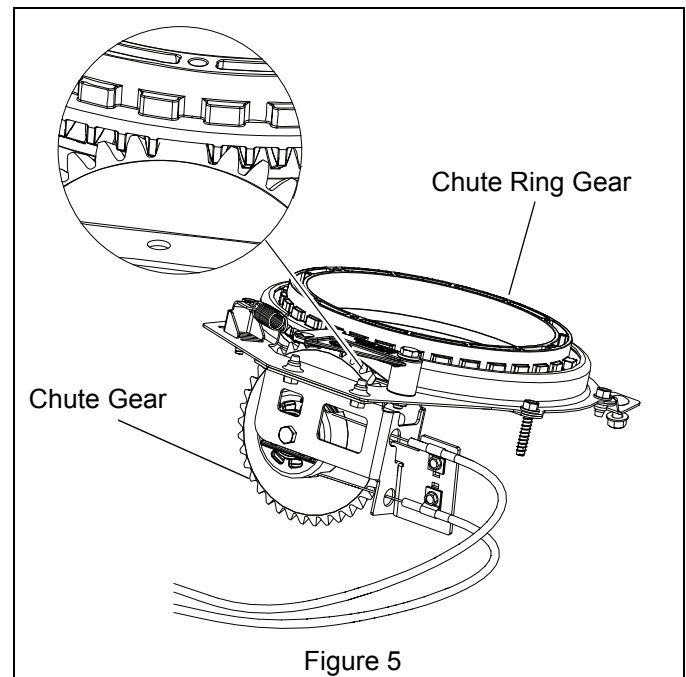


4. Remove two tapping screws and two nuts and bolts retaining chute ring assembly to unit. Remove assembly and retain hardware. See Figure 4.

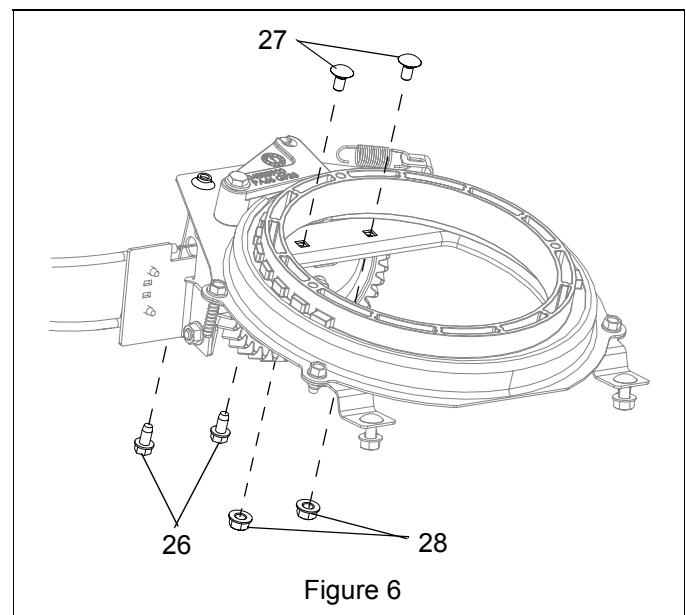


5. Install remote chute assembly (Items 1 – 25) onto chute ring assembly.

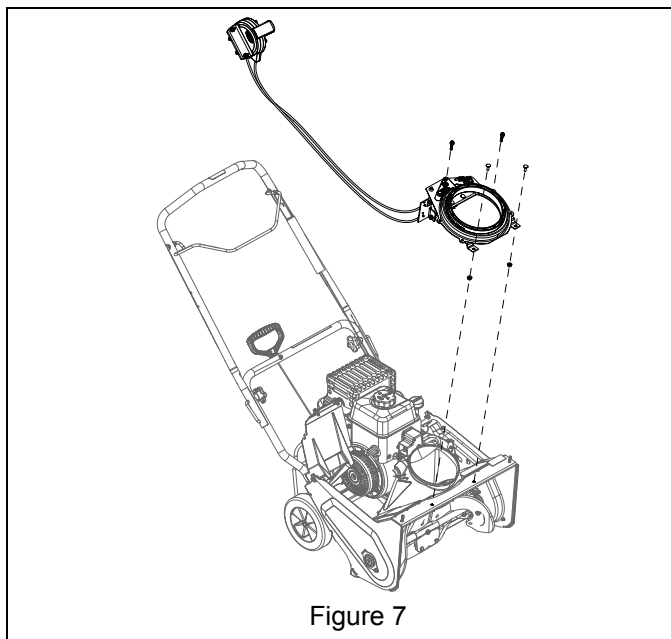
- a. Align chute gear teeth (in the remote chute assembly) with chute ring gear teeth (in the chute ring assembly). See Figure 5.



- b. Secure assemblies together with two round head square neck bolts and nuts (Items 27 and 28) and two tapping screws (Item 26). Install hardware as shown in Figure 6.



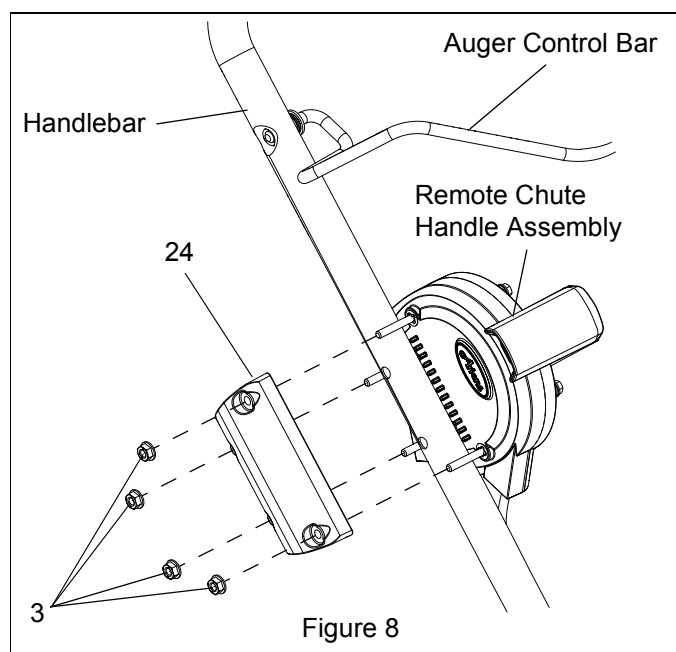
6. Install completed assembly onto unit. Fasten with hardware removed in Step 4. See Figure 7.



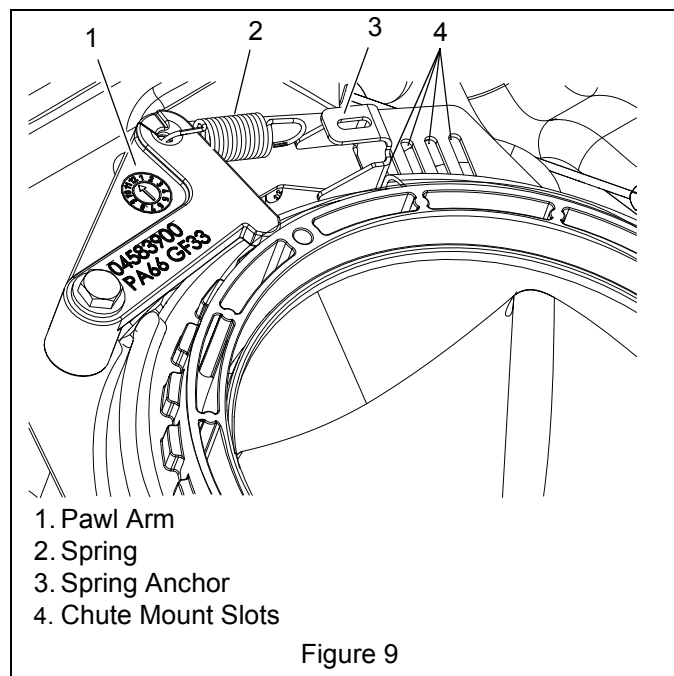
7. Attach remote chute handle to upper handlebar.  
See Figure 8.

**NOTE:** It may be necessary to use a 1/4" drive ratchet with a 3/8" socket.

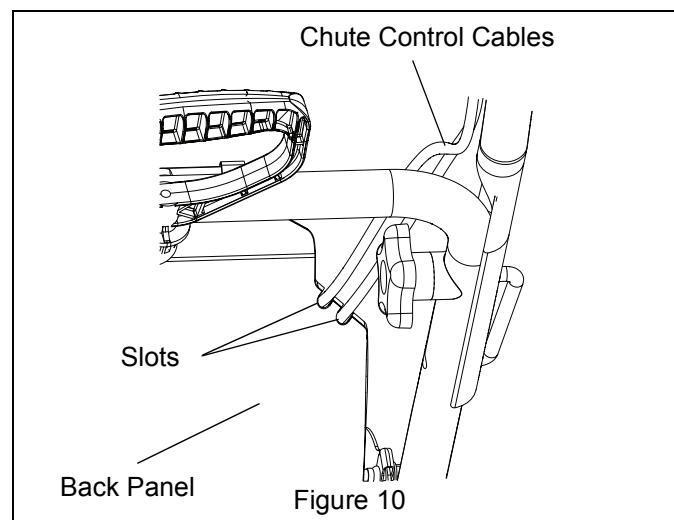
- Remove flange nuts (Item 3) and remote bracket (Item 24) from remote chute handle assembly.
- Position remote chute handle assembly on handlebar.
- Place remote bracket on handlebar and secure with flange nuts. Do not overtighten.
- Move remote chute handle completely forward and rearward to ensure proper operation.



8. Detach spring from spring anchor. Retain spring.  
Move spring anchor to the chute mount slot closest to the pawl arm. See Figure 9.



- Attach spring to spring anchor. It may be necessary to use a hook tool to stretch the spring to the anchor.
- Route chute control cables through slots in back panel. See Figure 10.



- Reinstall housing cover using hardware removed in Step 3. See Figure 3.
- Reinstall water guard ring and discharge chute to housing cover. Align holes and fasten using hardware removed in Step 2. See Figure 2.

**IMPORTANT:** Do not overtighten screws.